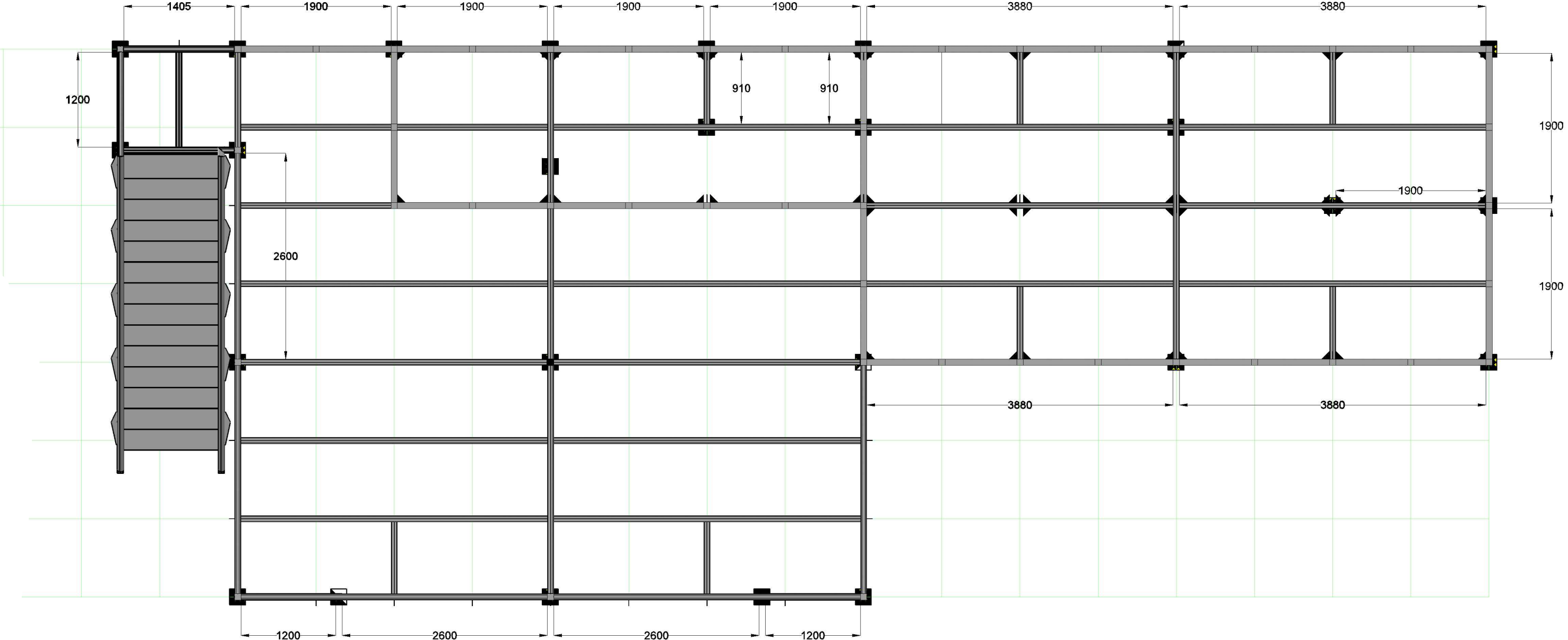
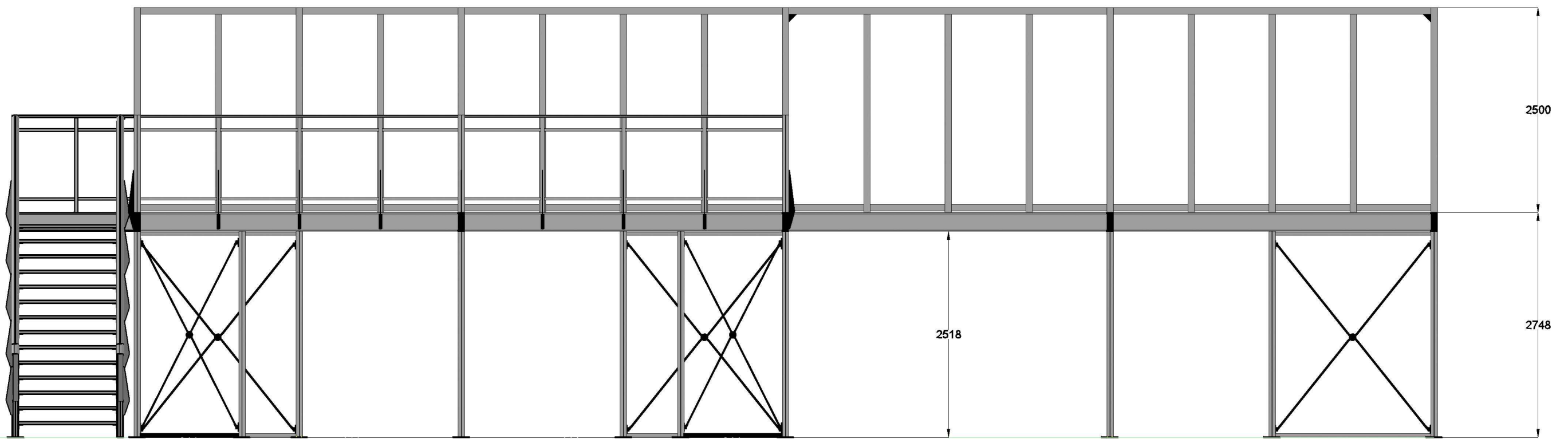


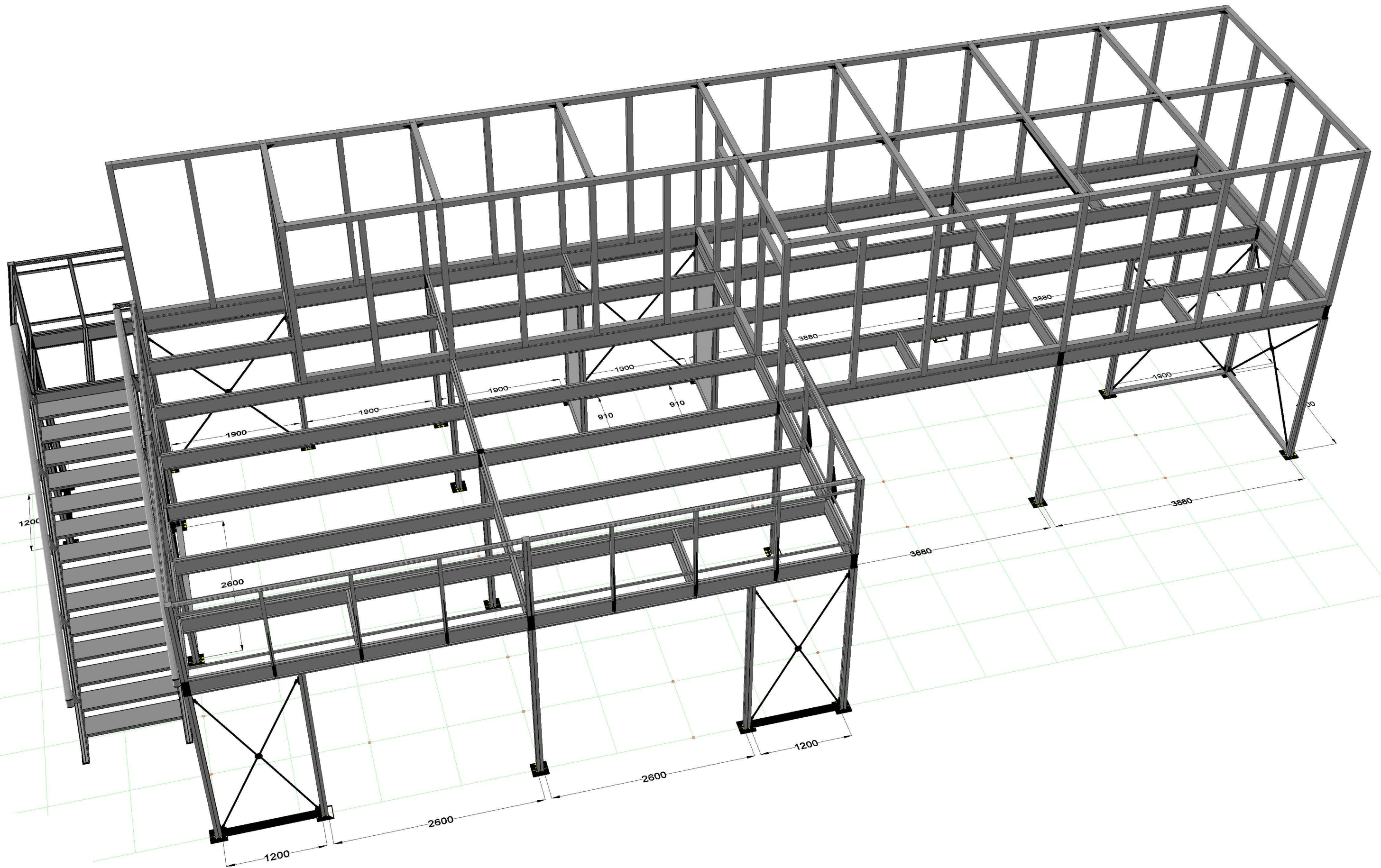


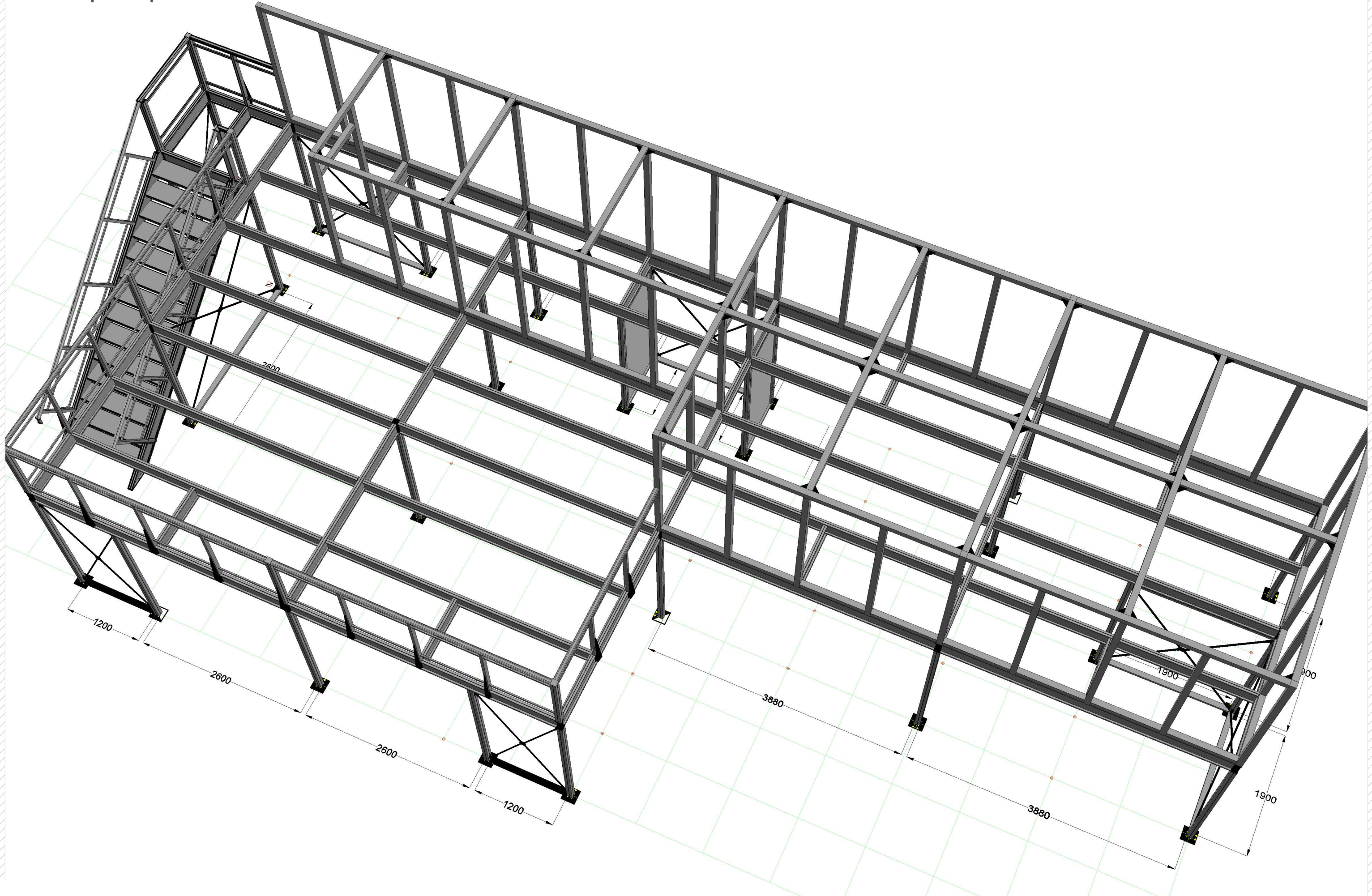
GREEN WEEK

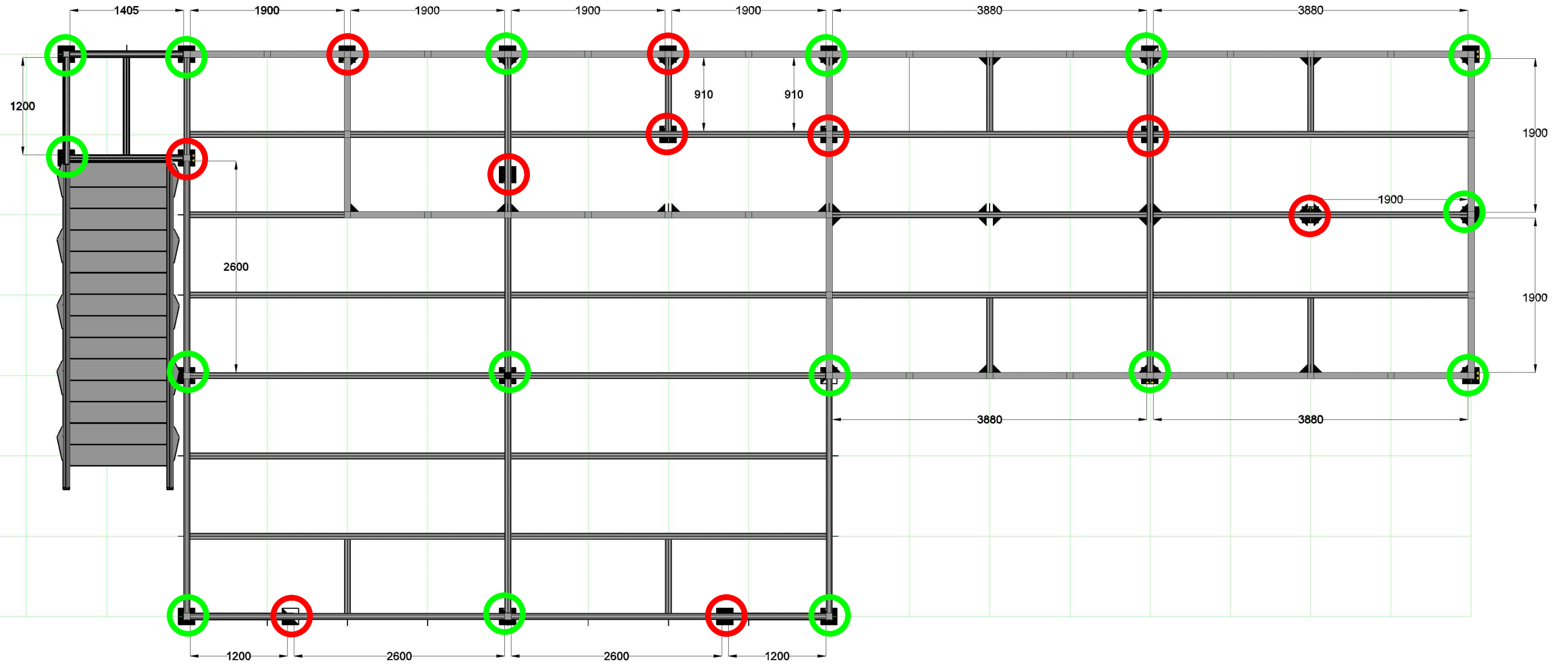
2 STORES STAND





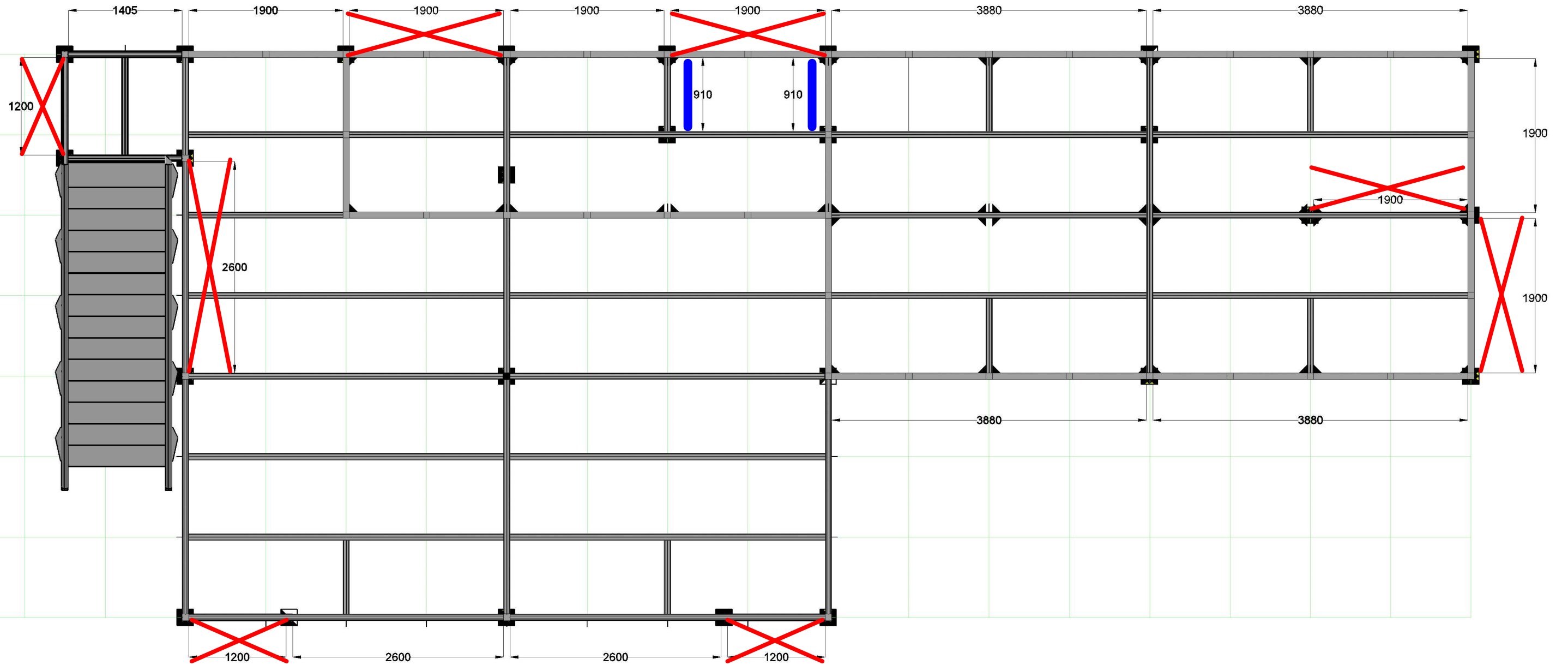






Standard-uprights with connector head

Reinforcement-uprights with spigot tube

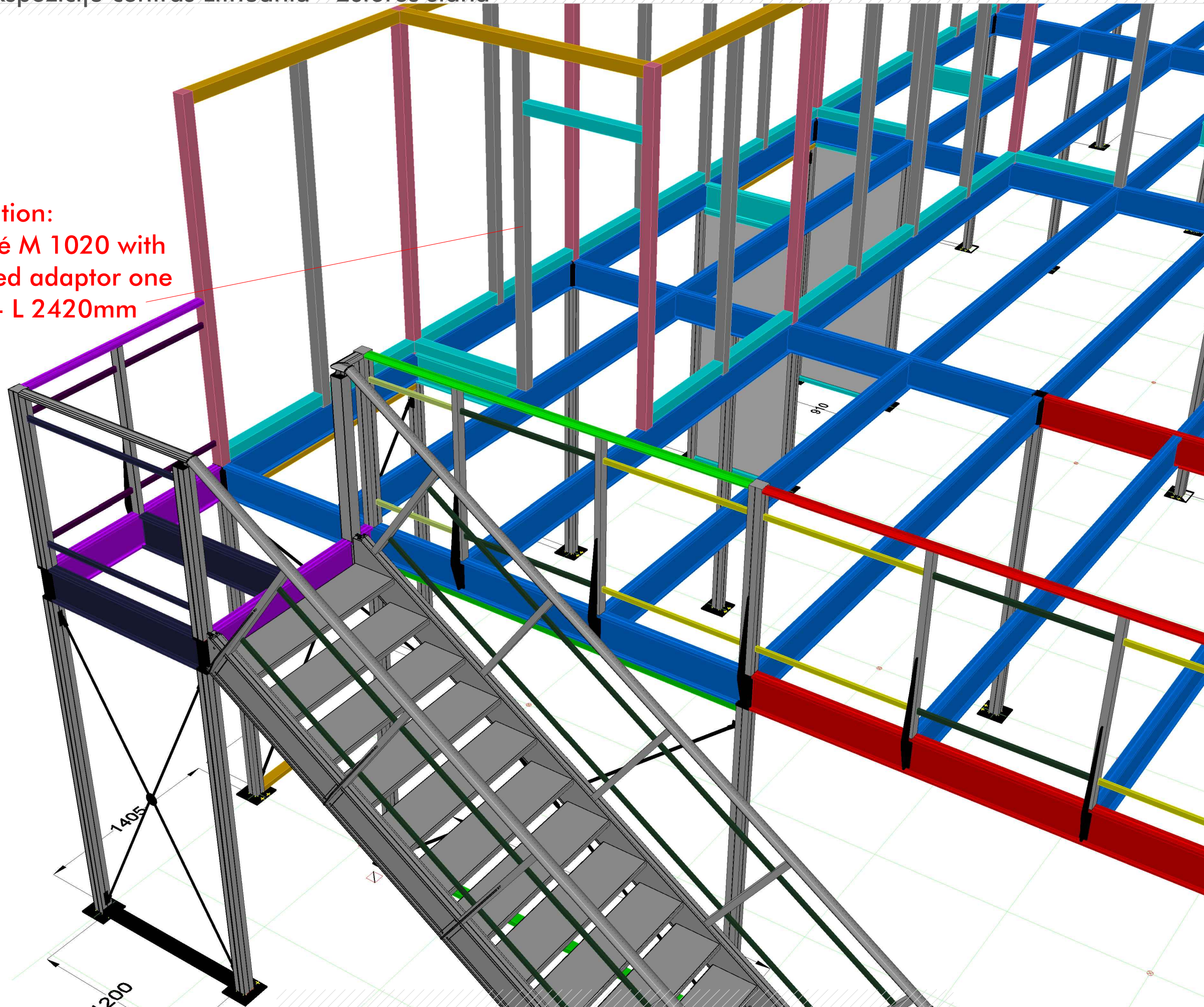


Reinforcement-crosses and pressure ties consists of 1 cross and 2 pressure ties per set

Rigid wall consists of 2 pressure ties and wooden infills



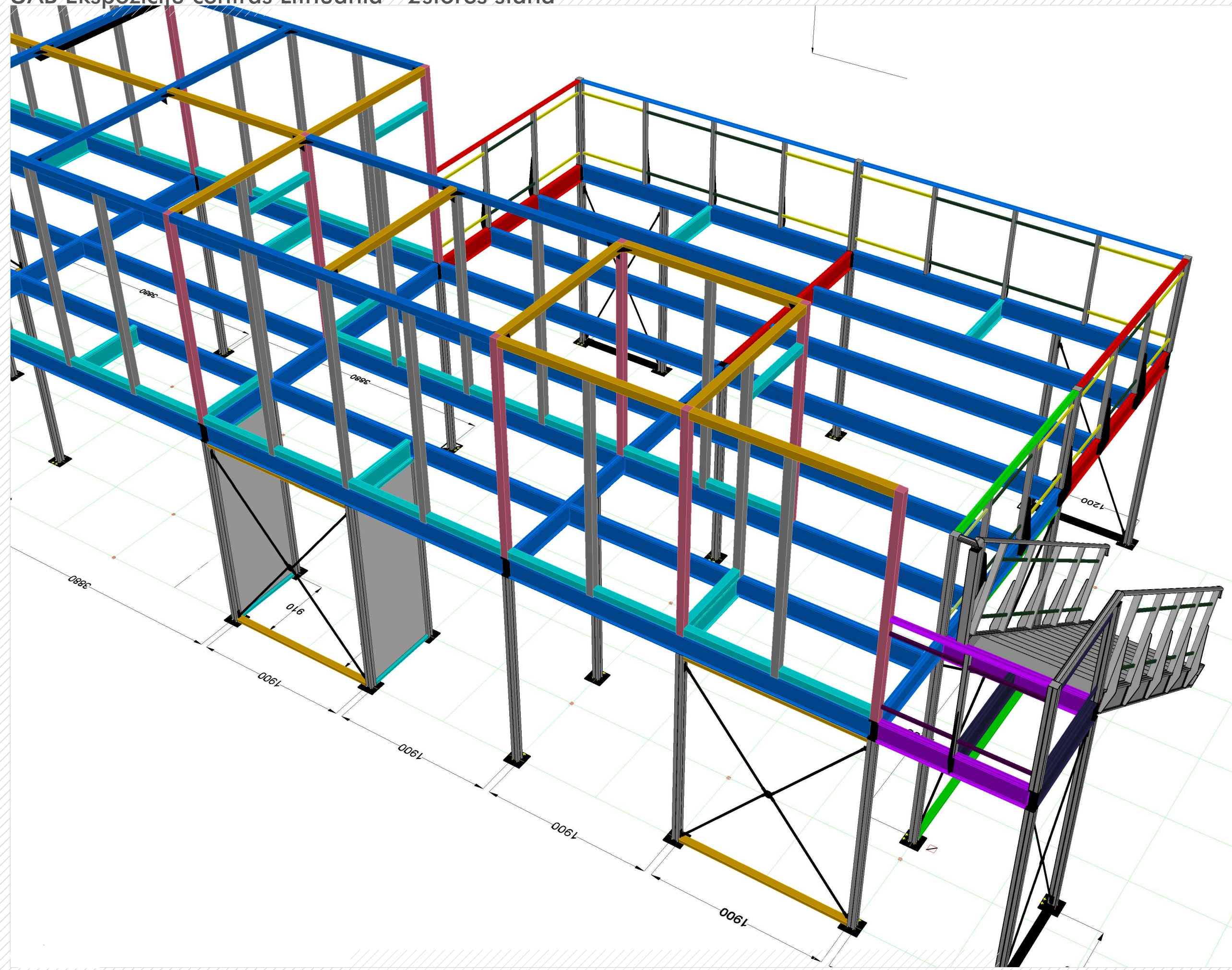
Attention:
Profilė M 1020 with
rotated adaptor one
side - L 2420mm



Extrusion length

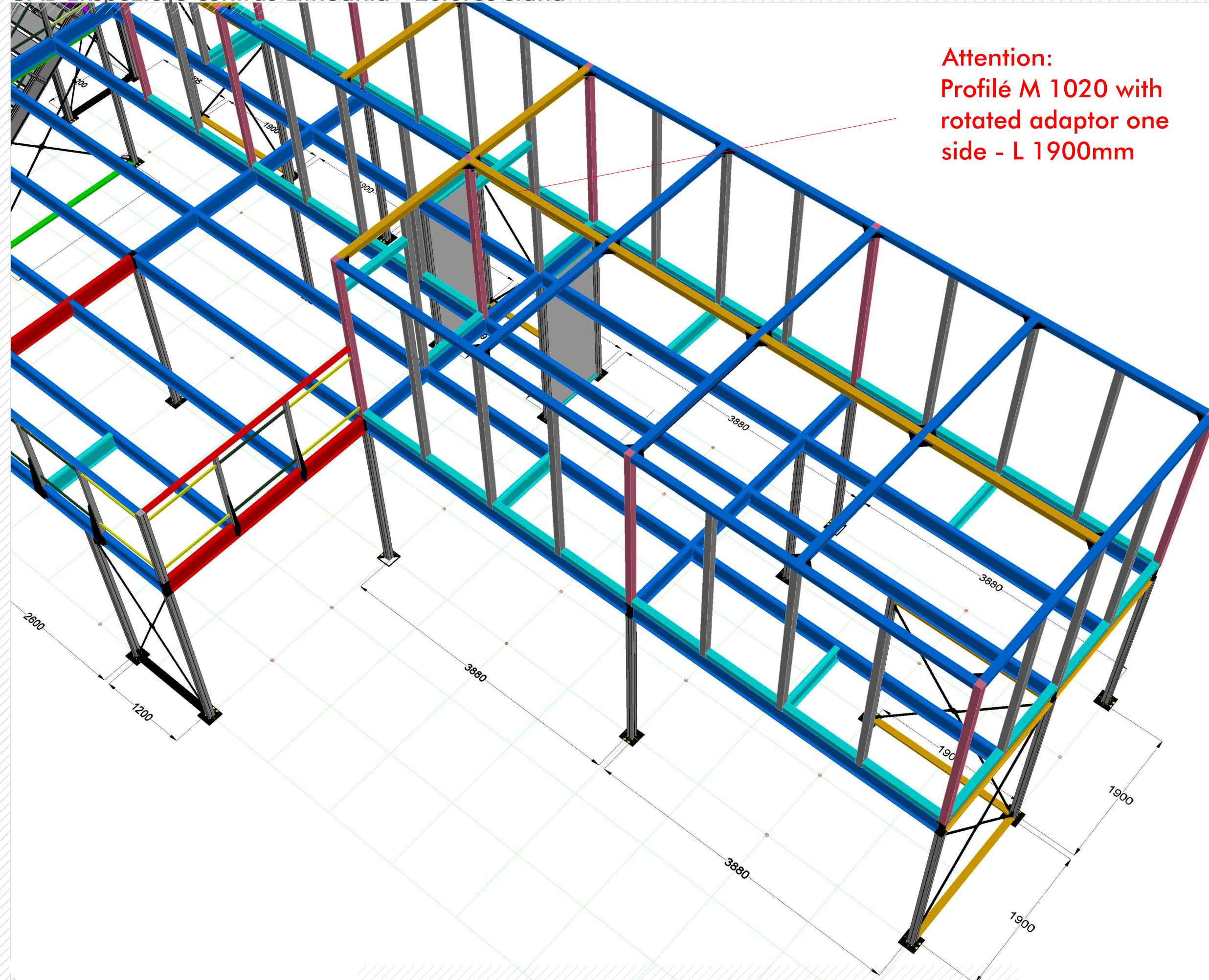
- 640 mm
- 682 mm
- 910 mm
- 930 mm
- 950 mm
- 1200 mm
- 1405 mm
- 1900 mm
- 2420 mm
- 2500 mm
- 2600 mm
- 2890 mm
- 3880 mm

UAB Ekspoziciju centras Lithuania - 2stores stand



Extrusion length

- 640 mm
- 682 mm
- 910 mm
- 930 mm
- 950 mm
- 1200 mm
- 1405 mm
- 1900 mm
- 2420 mm
- 2500 mm
- 2600 mm
- 2890 mm
- 3880 mm

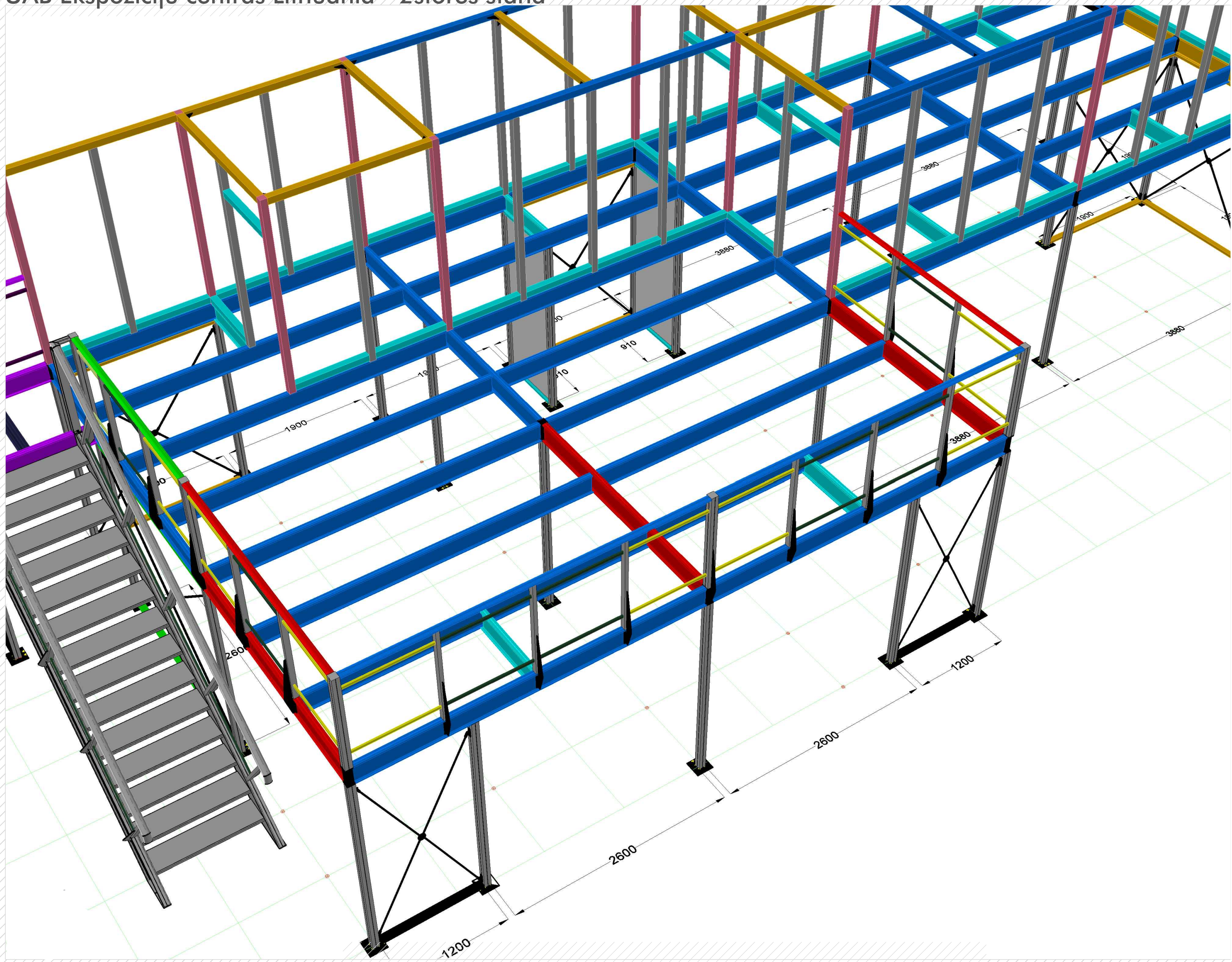


Attention:
Profilė M 1020 with
rotated adaptor one
side - L 1900mm

Extrusion length

- 640 mm
- 682 mm
- 910 mm
- 930 mm
- 950 mm
- 1200 mm
- 1405 mm
- 1900 mm
- 2420 mm
- 2500 mm
- 2600 mm
- 2890 mm
- 3880 mm

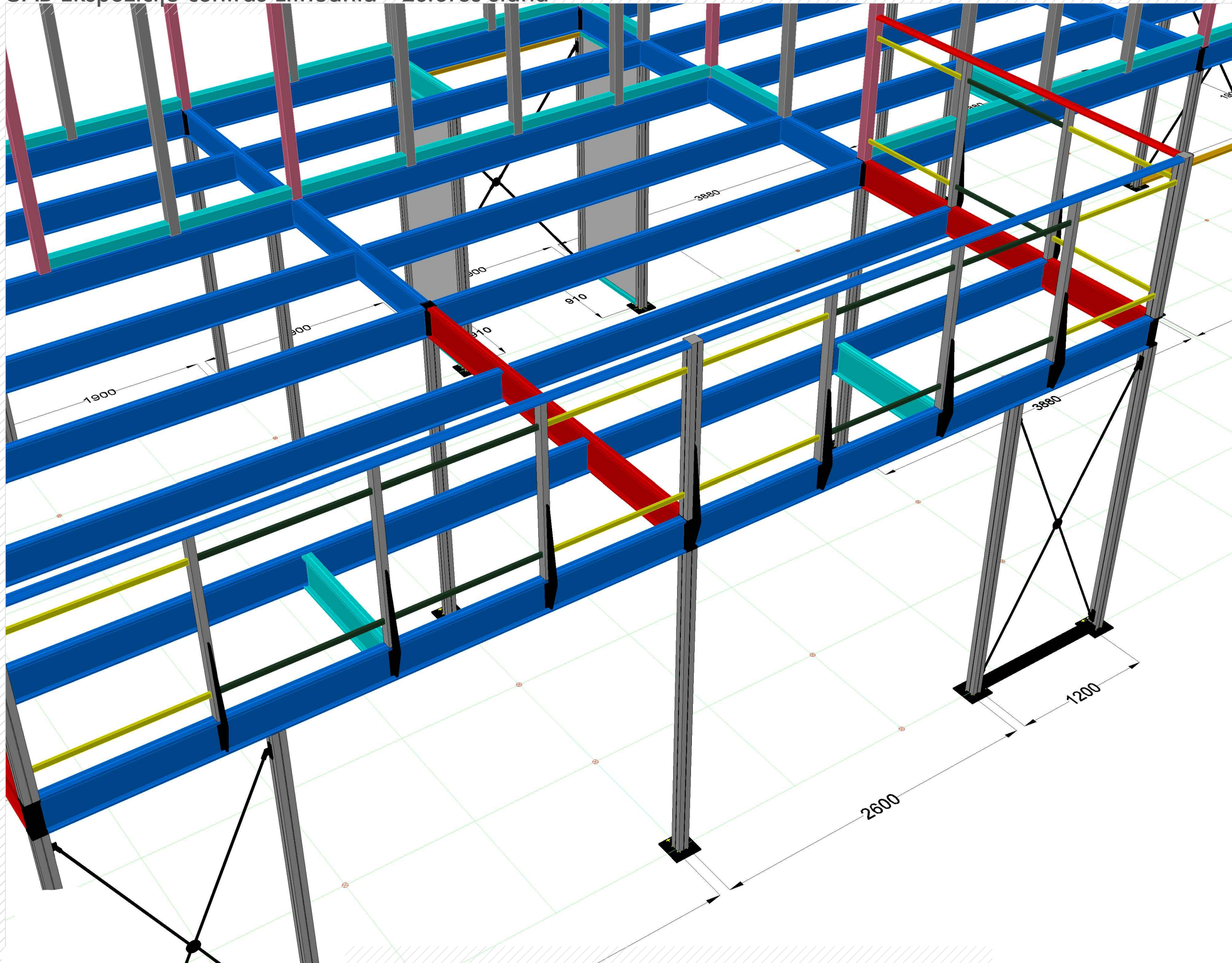
UAB Ekspoziciju centras Lithuania - 2stores stand



Extrusion length

- 640 mm
- 682 mm
- 910 mm
- 930 mm
- 950 mm
- 1200 mm
- 1405 mm
- 1900 mm
- 2420 mm
- 2500 mm
- 2600 mm
- 2890 mm
- 3880 mm

UAB Ekspoziciju centras Lithuania - 2stores stand



Extrusion length

- 640 mm
- 682 mm
- 910 mm
- 930 mm
- 950 mm
- 1200 mm
- 1405 mm
- 1900 mm
- 2420 mm
- 2500 mm
- 2600 mm
- 2890 mm
- 3880 mm